



DocMan™

Patent Pending



GOLD
ASSET MANAGEMENT AWARD

Innovative & mobile task management

“The days of paper and clipboards are gone !”

Companies need to perform onsite scheduled tasks within their operations. Inefficient paper records lead to increased process costs, potential loss of information, as well as a lack of progress visibility.

Building on the successful K2 TagMan™ asset verification application, **DocMan™** uses proven tablet technology to provide a safe and efficient solution for the management of documents and work-order based activities.

Using WiFi capability, work packs can be assigned and instantly downloaded to site, providing significant time saving and logistical efficiencies.

Progress against assigned activities, along with additional data and photos, can quickly and effectively be relayed back to management or a centralised project function.



Objective

Efficient and accurate task monitoring system



Challenge

Time-consuming and unreliable manual system



Solution

DocMan™

Removing the traditional need to interpret and transpose hand-written notes and then email, **DocMan™** also allows the overall status of activities to be quickly assessed - ideal in situations such as Shutdowns.

In areas where internet is not available, pre-loaded work orders can be processed efficiently, to be immediately transmitted upon return to a WiFi zone. New work orders can then also be received, increasing team productivity.

DocMan™ can be used on Ex certified iPads suitable for use in Zone 2 areas.

DocMan™ Features

- ☑ Easy to install
- ☑ Easy to use
- ☑ Minimal training required
- ☑ Load work orders and tasks
- ☑ No data re-entry
- ☑ Data changes can be uploaded wirelessly
- ☑ Intuitive photo filenames makes matching photos to data easy
- ☑ Multiple high-resolution photos can be taken and stored against tasks
- ☑ Works on iPad or iPad Mini
- ☑ Works with 3G/cellular, wireless or completely offline
- ☑ Available on Ex certified iPads for Zone 2 areas

• **Perth Office** +61 8 6210 2700 Level 1, 200 Adelaide Terrace, East Perth, WA 6004 • **Brisbane Office** +61 7 3227 1100 Level 4, 500 Queen Street, Brisbane, QLD 4000
www.k2techno.com.au or enquiries@k2techno.com.au

• **Perpilion Pte Ltd Registered Office - SIB Consulting** +65 6737 2117, 400 Orchard Road #21-06 Orchard Towers, Singapore 238875
www.perpilion.com



DocMan™

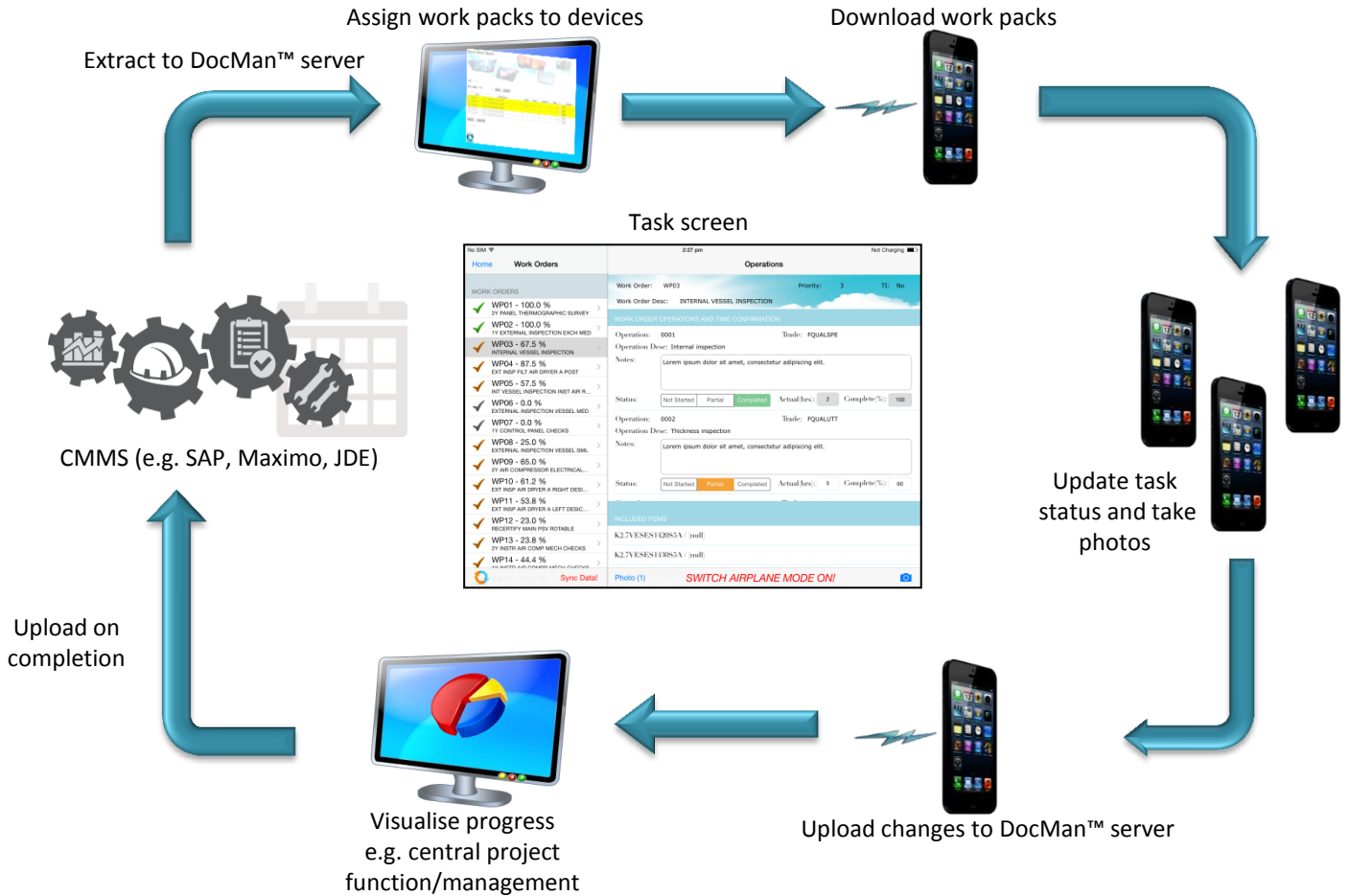
Patent Pending



GOLD
ASSET MANAGEMENT AWARD

DocMan™ Process

DocMan™



The Future

- ☑ QA / QC sign-off
- ☑ View Piping and Instrumentation diagrams (P&ID's), etc.
- ☑ Voice memos
- ☑ Videos
- ☑ Android compatibility
- ☑ GPS enabled (for non Ex areas)

Potential Applications

- ☑ Work execution – plans, procedures, documents
- ☑ Shutdown activities
- ☑ Document validation
- ☑ Drawing validation
- ☑ Technical data validation

Contact Us

K2 Technology Pty Ltd

Perth Office +61 8 6210 2700 Level 1, 200 Adelaide Terrace, East Perth, WA 6004

Brisbane Office +61 7 3227 1100 Level 4, 500 Queen Street, Brisbane, QLD 4000

www.k2techno.com.au or enquiries@k2techno.com.au

Perpilion Pte Ltd

Singapore Registered Office – SIB Consulting +65 8432 1384, 400 Orchard Road

#21-06 Orchard Towers, Singapore 238875

www.perpilion.com

Scan our QR code to link straight to our website or find us on Facebook, Twitter and LinkedIn.

Starlight supporter

